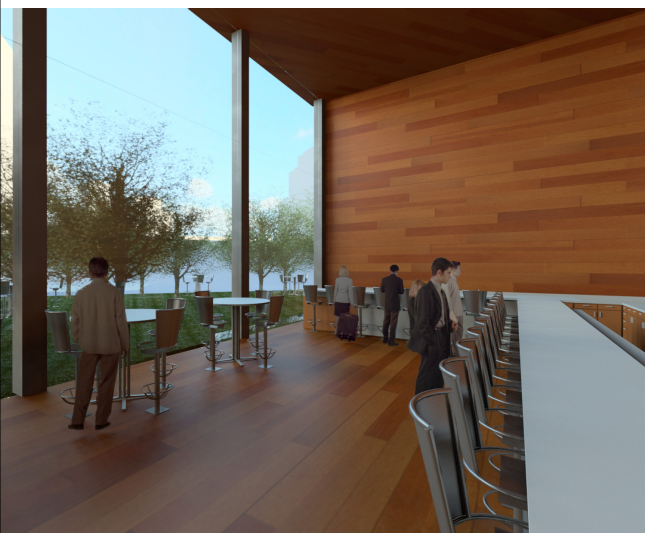
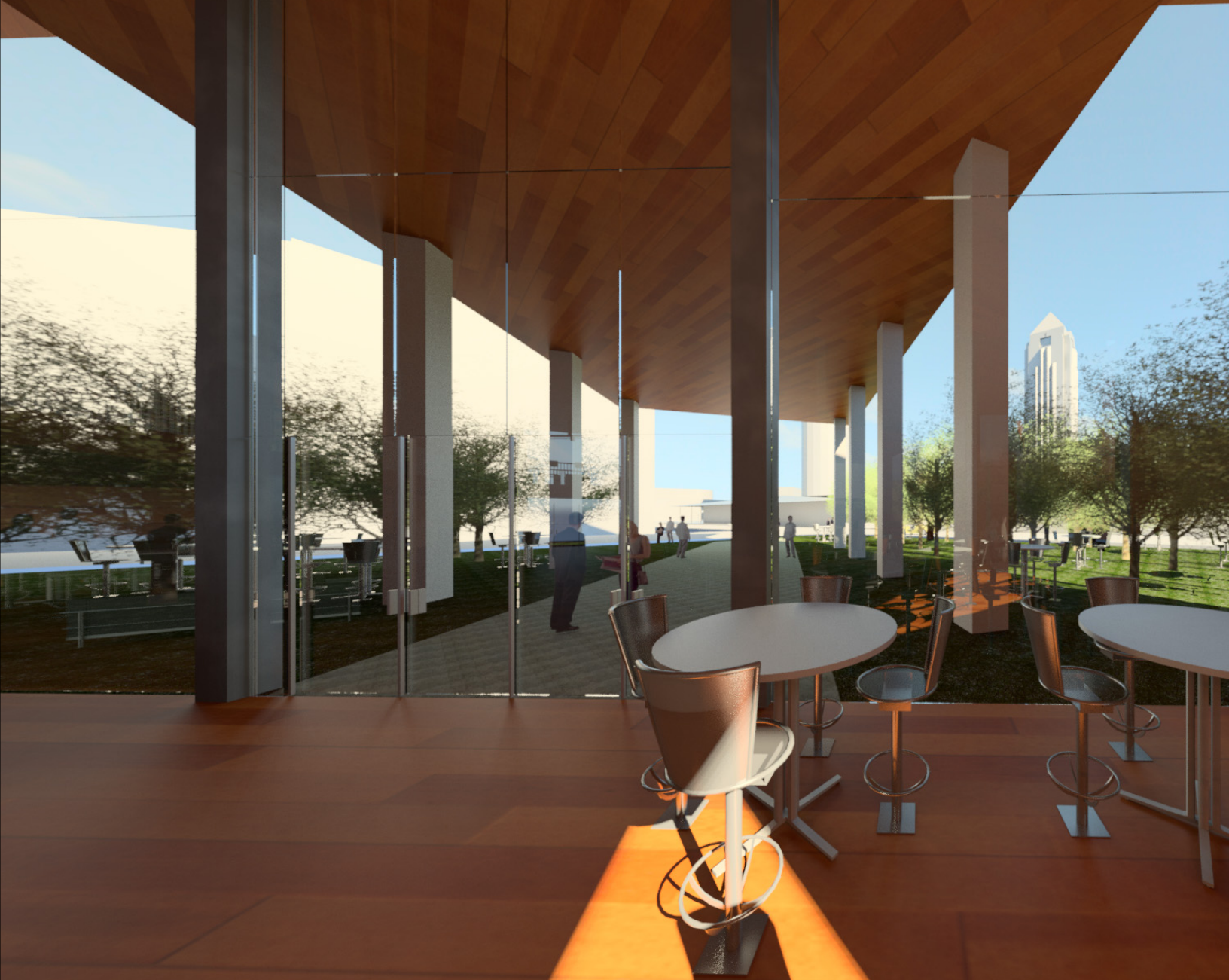


Studio 5, Spring 2015: Boutique Hotel, Downtown Dallas [Designed in Revit]

The design program for this studio was to design a boutique hotel in downtown Dallas on a site across from Klyde Warren Park.

The emphasis of the design of this hotel are the views the Dallas Arts District and downtown Dallas from the hotel. The design also incorporates nature into it and uses large amounts of glass in order to pull in the views of the trees and landscaping around the hotel as well as the view of Klyde Warren Park. The hotel while giving views of the city also gives of an atmosphere that makes it seem as if you're not in the city anymore. So you can explore the city life and culture and then go back to the hotel and feel like you're not in the city anymore.

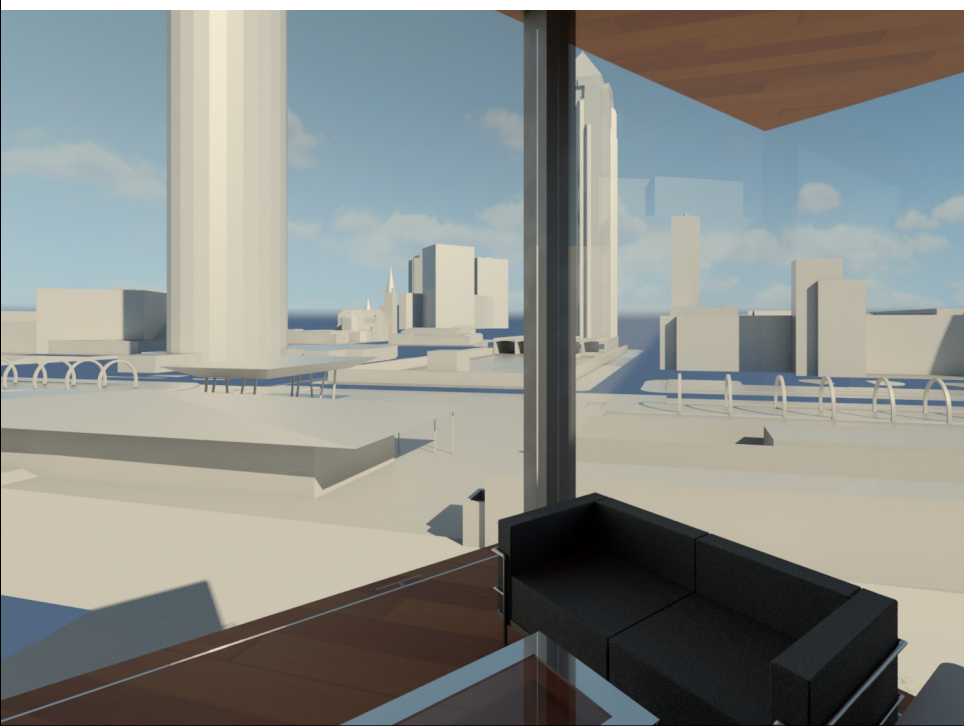
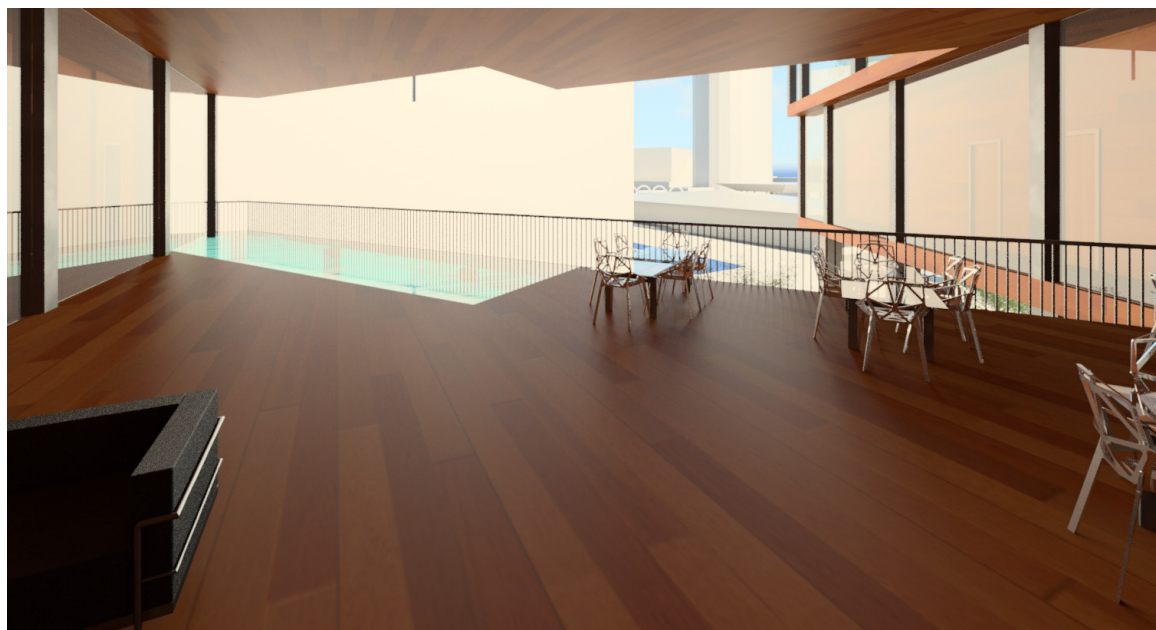




Ground Floor Pictures



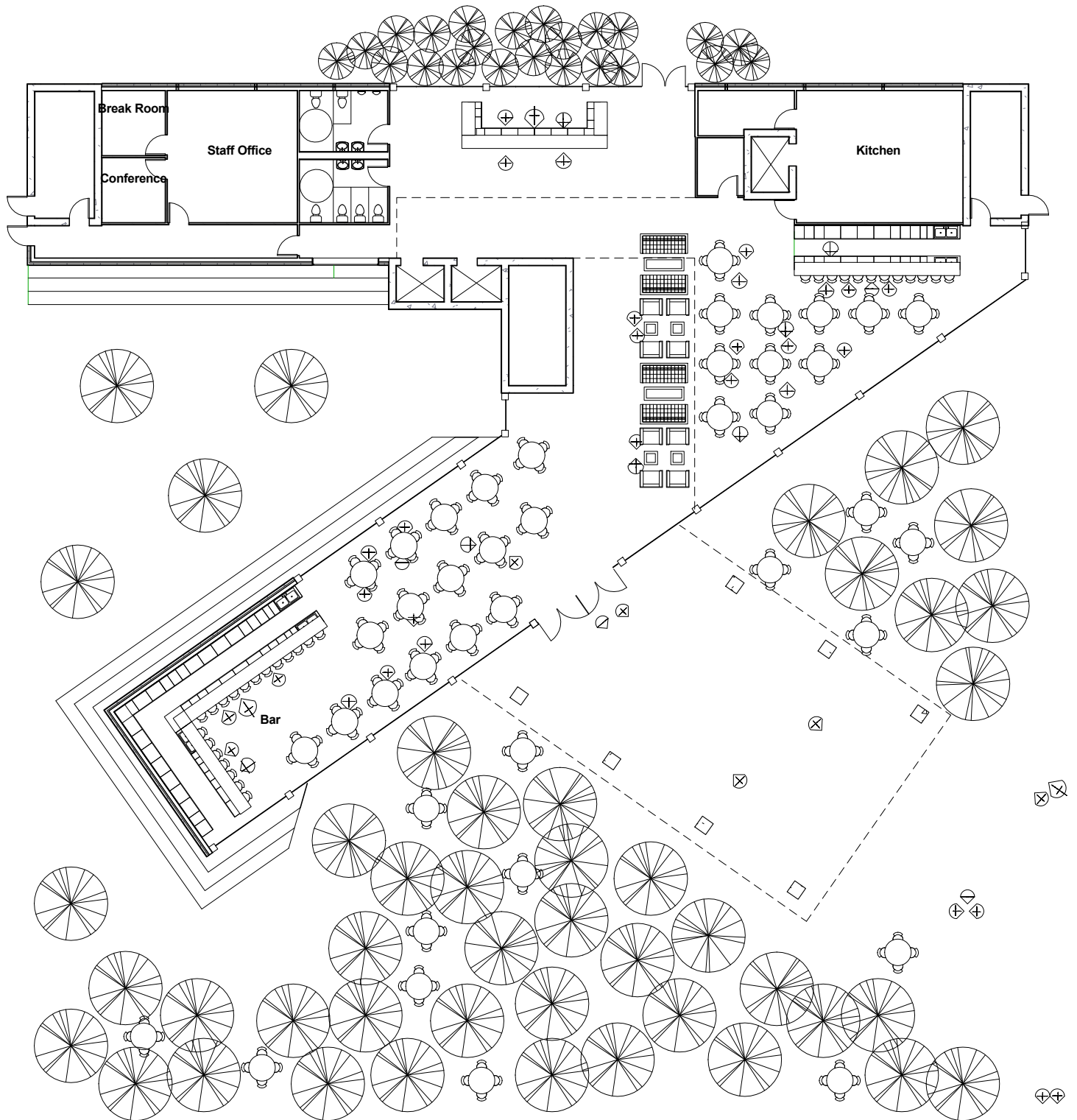
Ground Floor Pictures





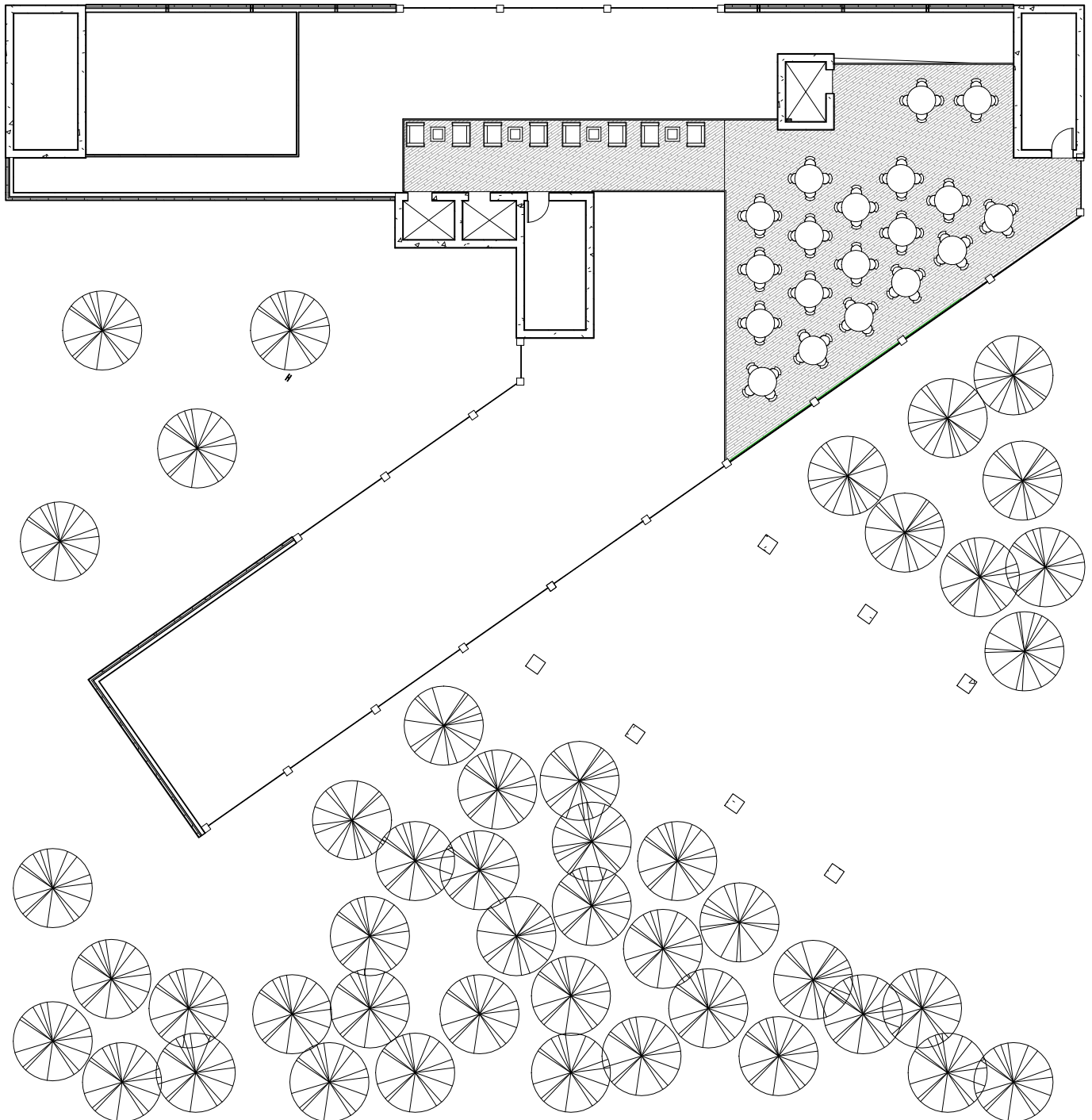






1

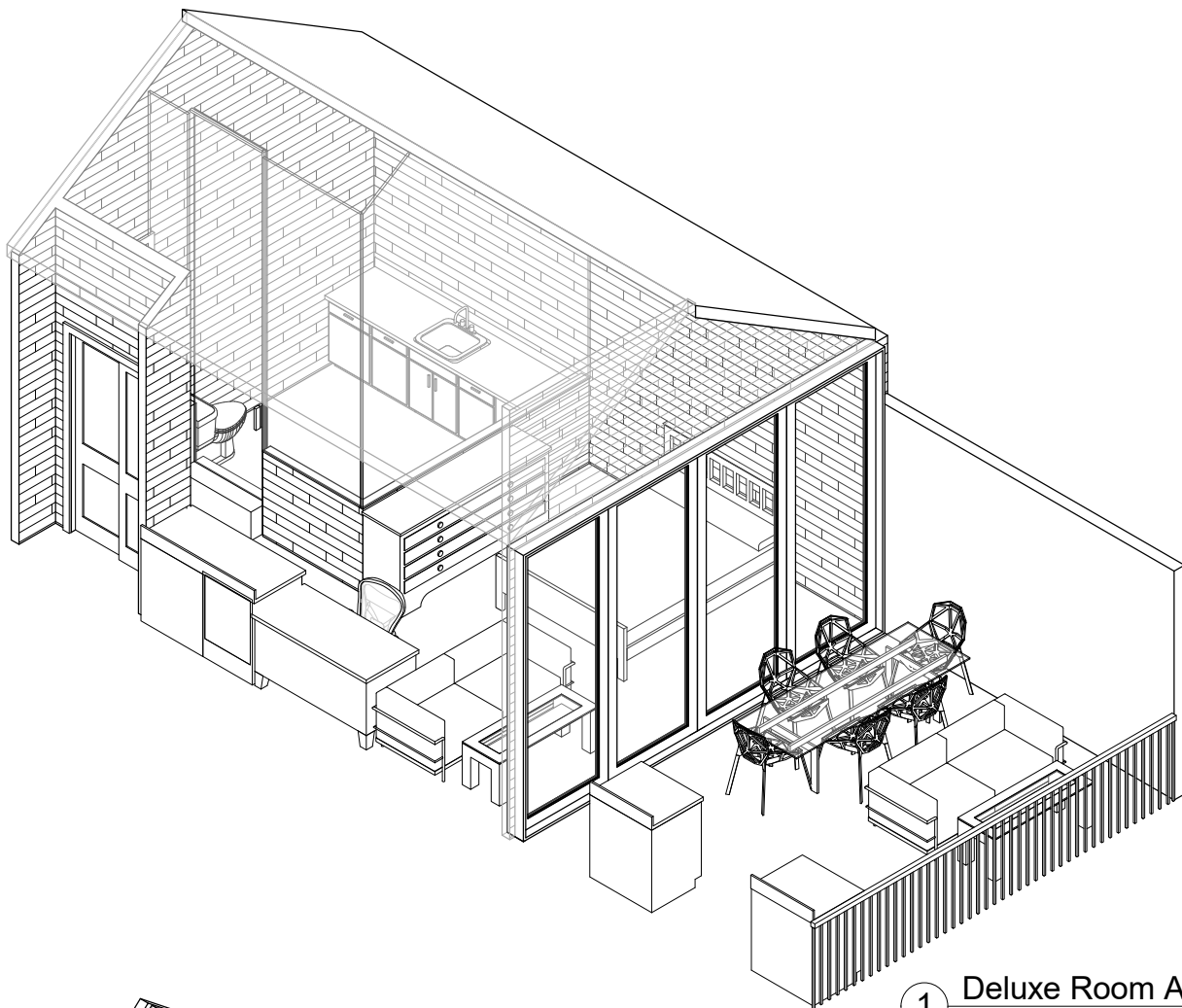
Ground Floor
3/64" = 1'-0"





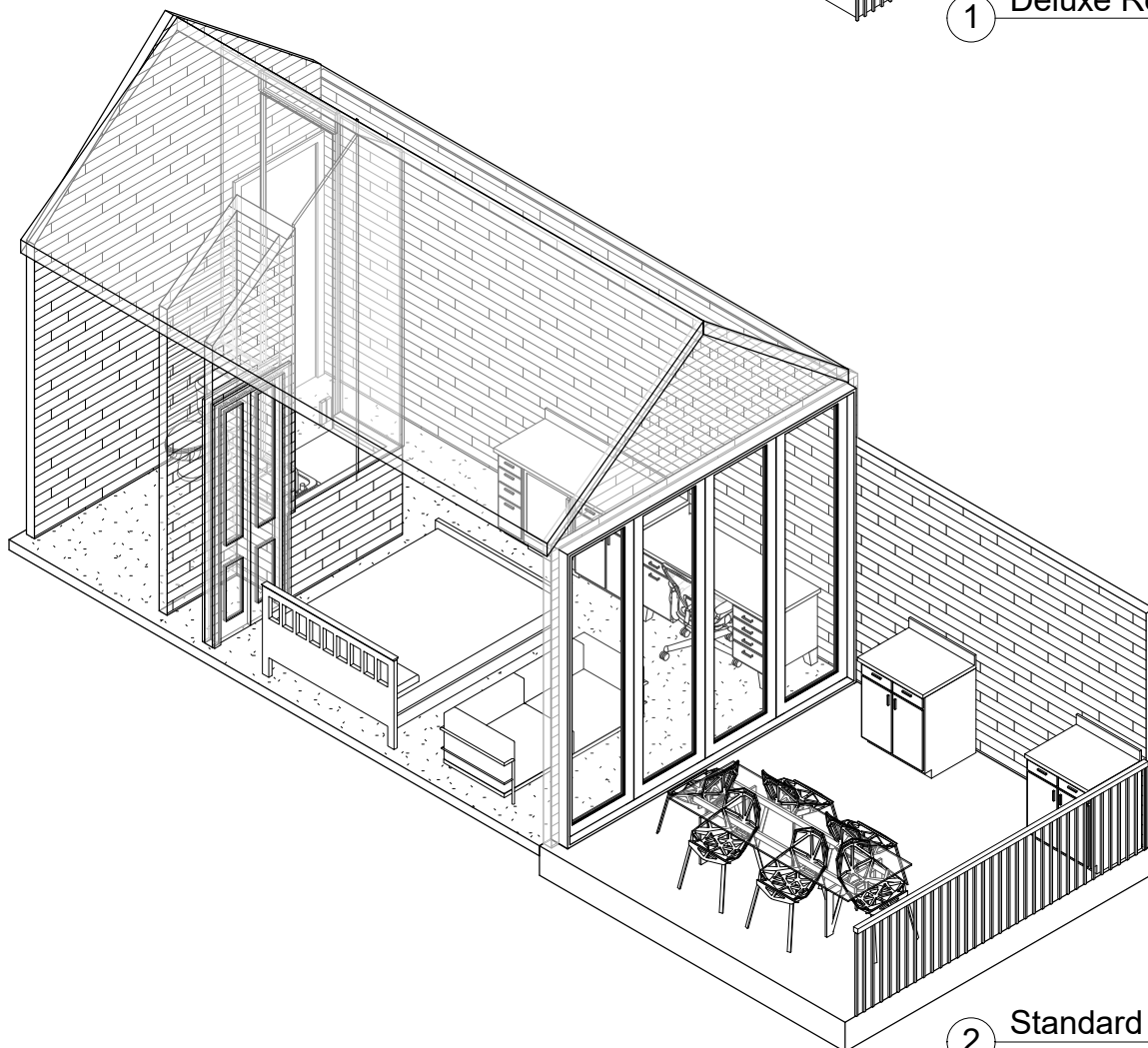
1 Level 2 & 4 Floor Plan with Structural Grid
3/64" = 1'-0"





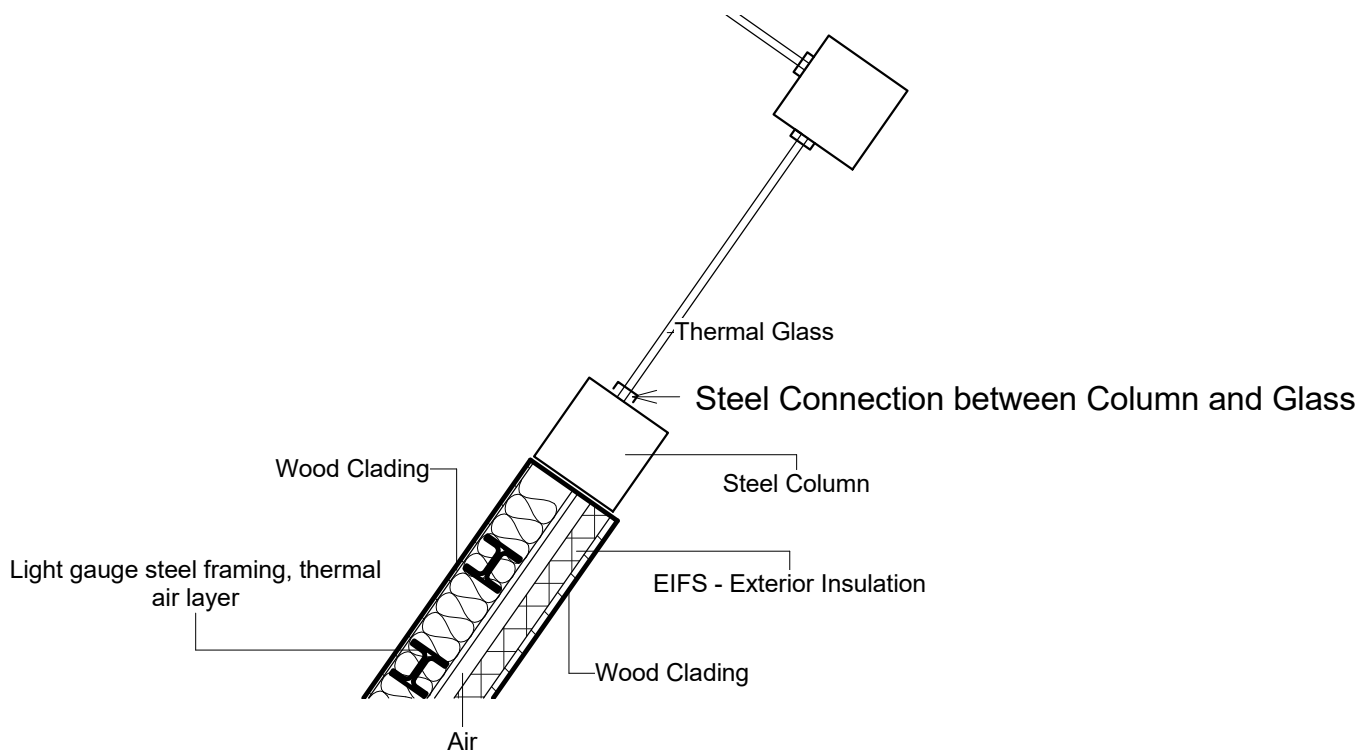
1

Deluxe Room Axo

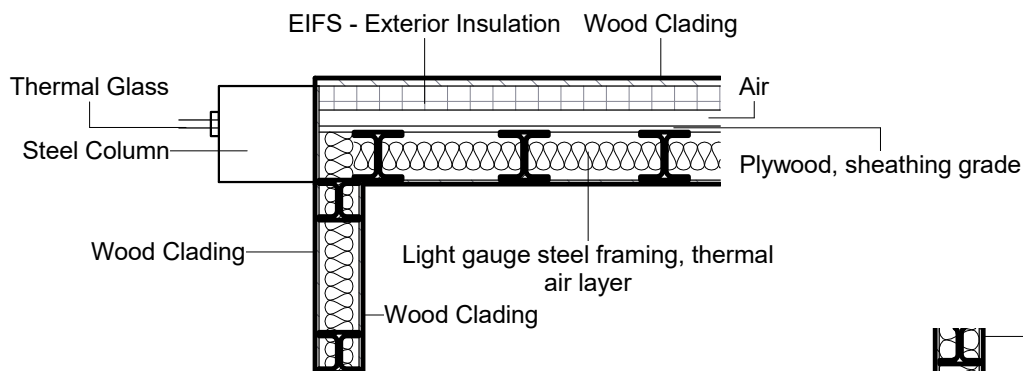


2

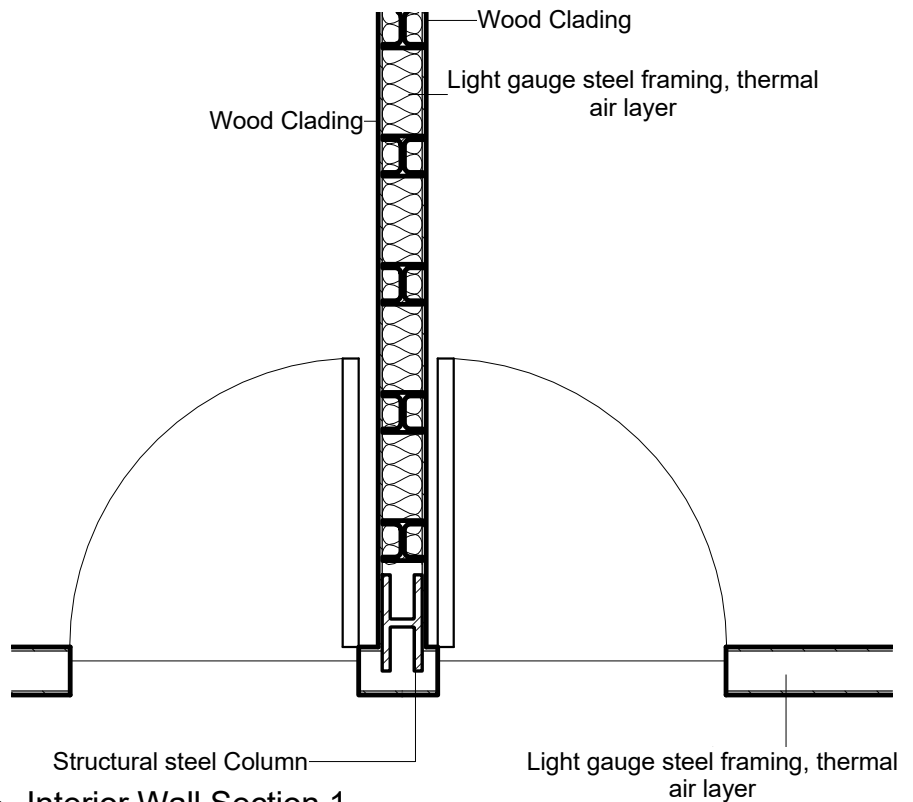
Standard Room Axo



① Exterior Wall Section 1
1/2" = 1'-0"



② Exterior Curtian Wall Detail
1/2" = 1'-0"



③ Interior Wall Section 1
1/2" = 1'-0"