

Spain Study Abroad Studio, Urban Plaza [Designed using Rhino]

The design project was to design a multi-use urban plaza to renovate an existing urban plaza to revitalize the neighborhood.

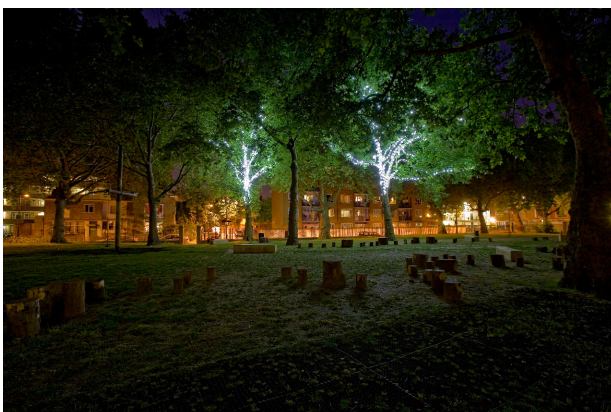
Plaza Pumarejo Narrative

The idea behind the redesign of Plaza Pumarejo is to take the current plaza which as it is laid out greatly limits its use and to redesign it to increase its functionality. The plaza needs to have its functionality increased so that the residents around the area can increase their use of and enjoyment of the plaza. The economy of the surrounding area will also increase with the redesign of the plaza and it will also become a safer place since the drunks and drug users won't have the anonymity that they have now which is why they stay there currently.

The focus of the redesign is the idea of having a place to go and socializes with friends and family while enjoying a semi escape from the reality of the city. To achieve this vegetation as been employed in order to achieve a feeling that you are in a space different than the everyday city. The trees are employed as shading but they also give the feeling of serenity to the space. The trees also respond to the global need of creating more fresh air in cities by clean the dirty air through vegetation. The vines and flowers on top of the arbor also help achieve this. The fountain that is the focal point help recall the majesty that the Pumajero Palace as it once was. The mosaic tiling call attention to the great use of tile in Spain and the glass on the kiosk can be used as a surface to project advertisement or information onto when needed. Change in surface material from the street to the plaza shows the conflict between the need for vehicle traffic and space for people to socialize. At the same time thought because they are at similar height level it shows the connectivity that takes place in all activities in an urban environment and how none are truly independent of the others. Overall the plaza acts as a place where people can go to escape their troubles for a little bit and to socializes with friends and family.



Precedents



Plaza Pumarejo Now



Issues with Current Plaza

Resurface the ground creating a uniform looking surface creating a feel of continuation across the plaza.

Make sure the former street is truly closed off so that it can become part of the plaza.

Remove the benches as they only create an unnecessary barrier to the plaza making it feel small and cramped and also making it smaller than it needs to be.

Solutions of Plaza Redesign

Public Seating is now around a fountain under a tree providing a nice shaded place to sit while

The placement of the fountain and seating does not cause the plaza feel smaller than it is like the previous placement of the benches did.

The plaza has been resurfaced into a single level.

Advertisements projected on to glass.

Plaza Pumarejo Redesigned



Plaza Pumarejo Now



Issues with Current Plaza

No Kiosk in Plaza.

Make the bollards line up so that the plaza has a uniform edge.

Don't let scooters park on plaza.

Solutions of Plaza Redesign

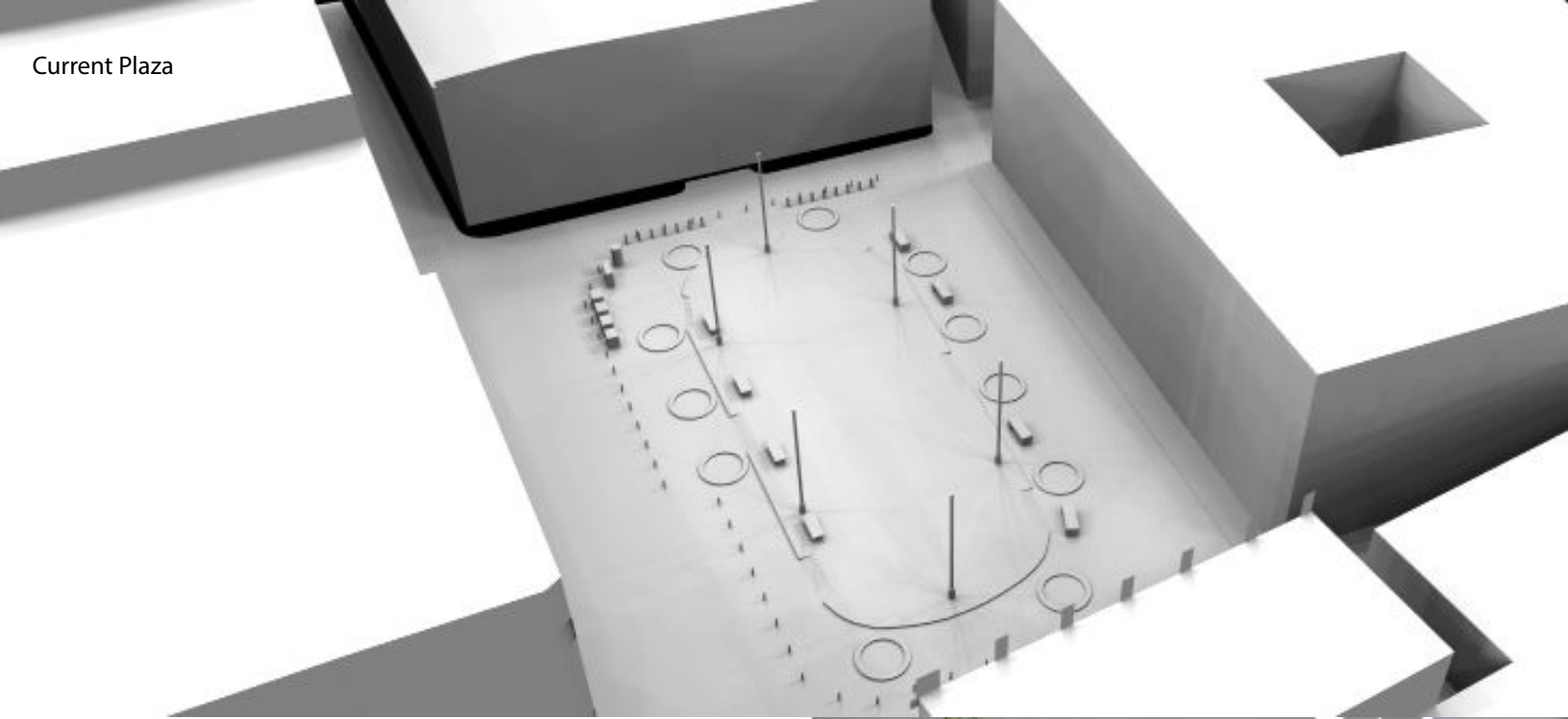
New Kiosk designed with two tiled mosaic sides that recall the historical use of tile in Spain.

Renewed night life do to plaza having more interesting light such as underwater lights in fountain and lights under trees.

Plaza Pumarejo Redesigned



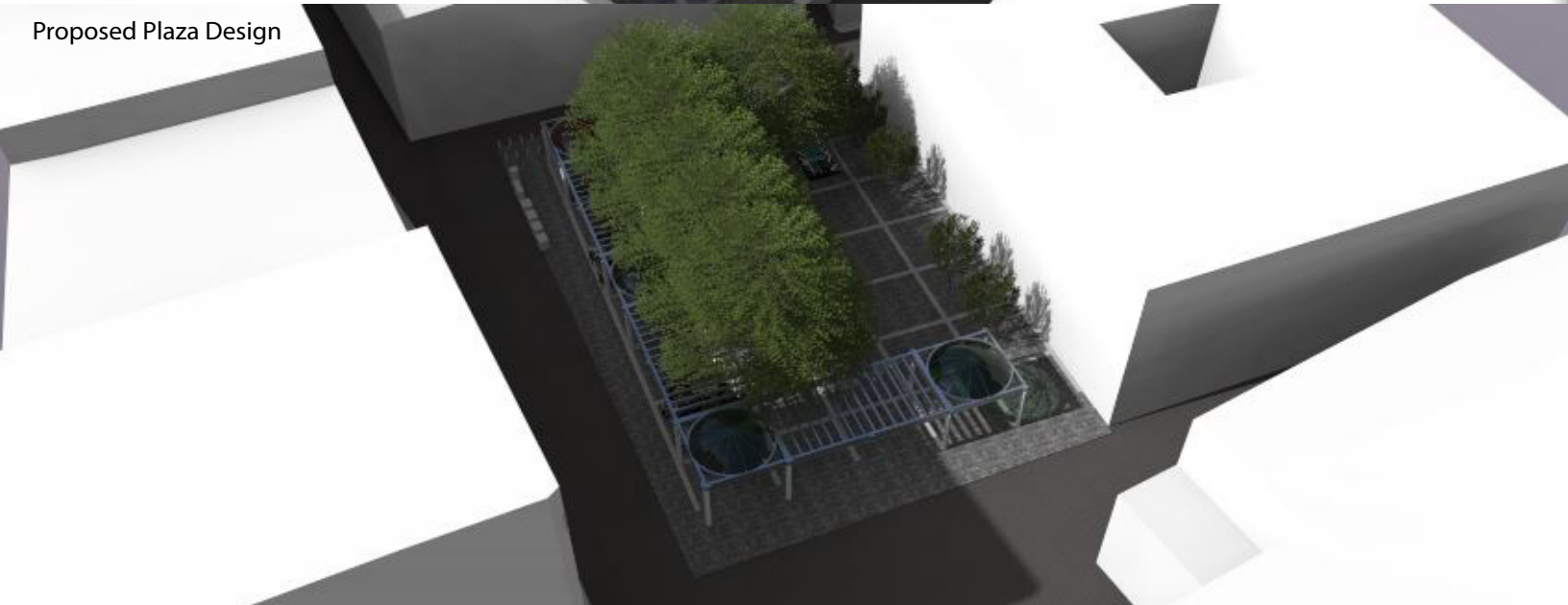
Current Plaza

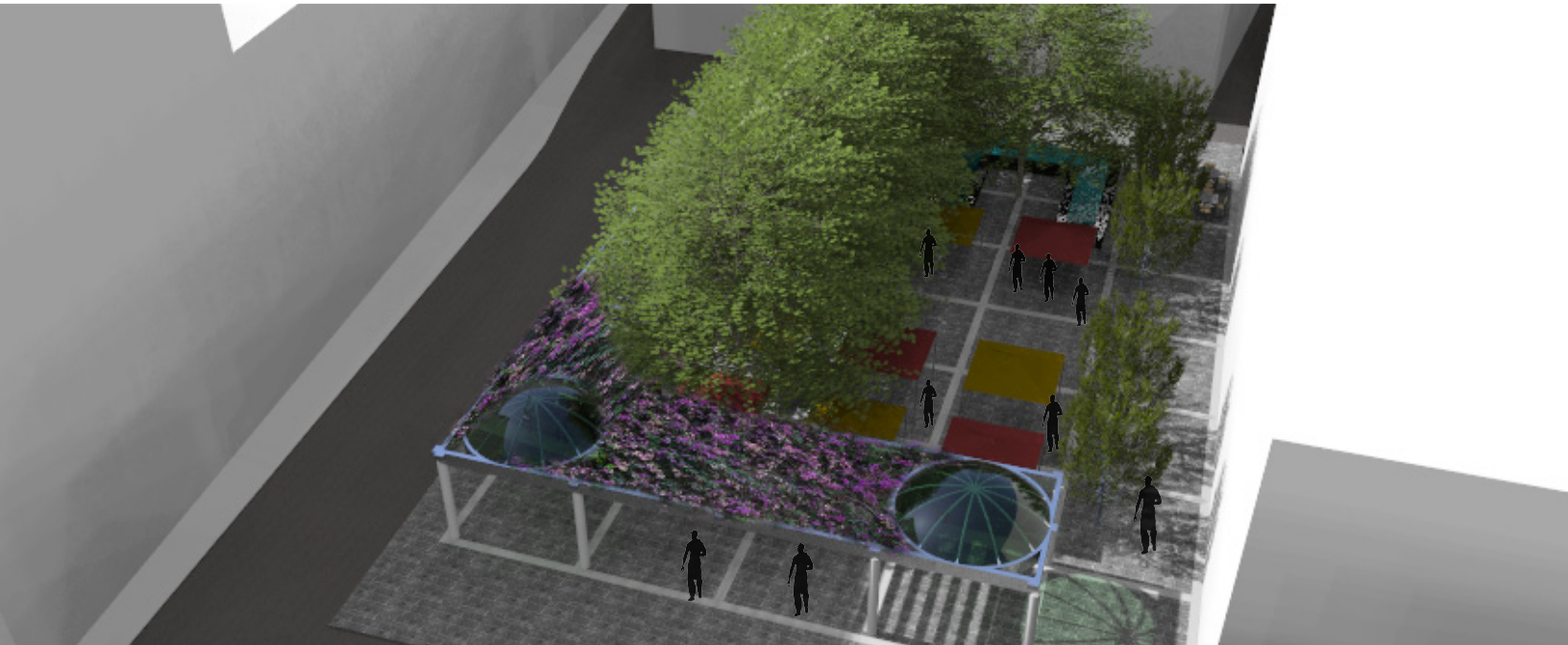


Proposed Plaza Design



Proposed Plaza Design





The row of smaller orange trees provide shading as well as well as call to the culture context of the use of orange trees around Seville and demarcate the important façade of the Pumarejo Palace of the east side of the plaza.

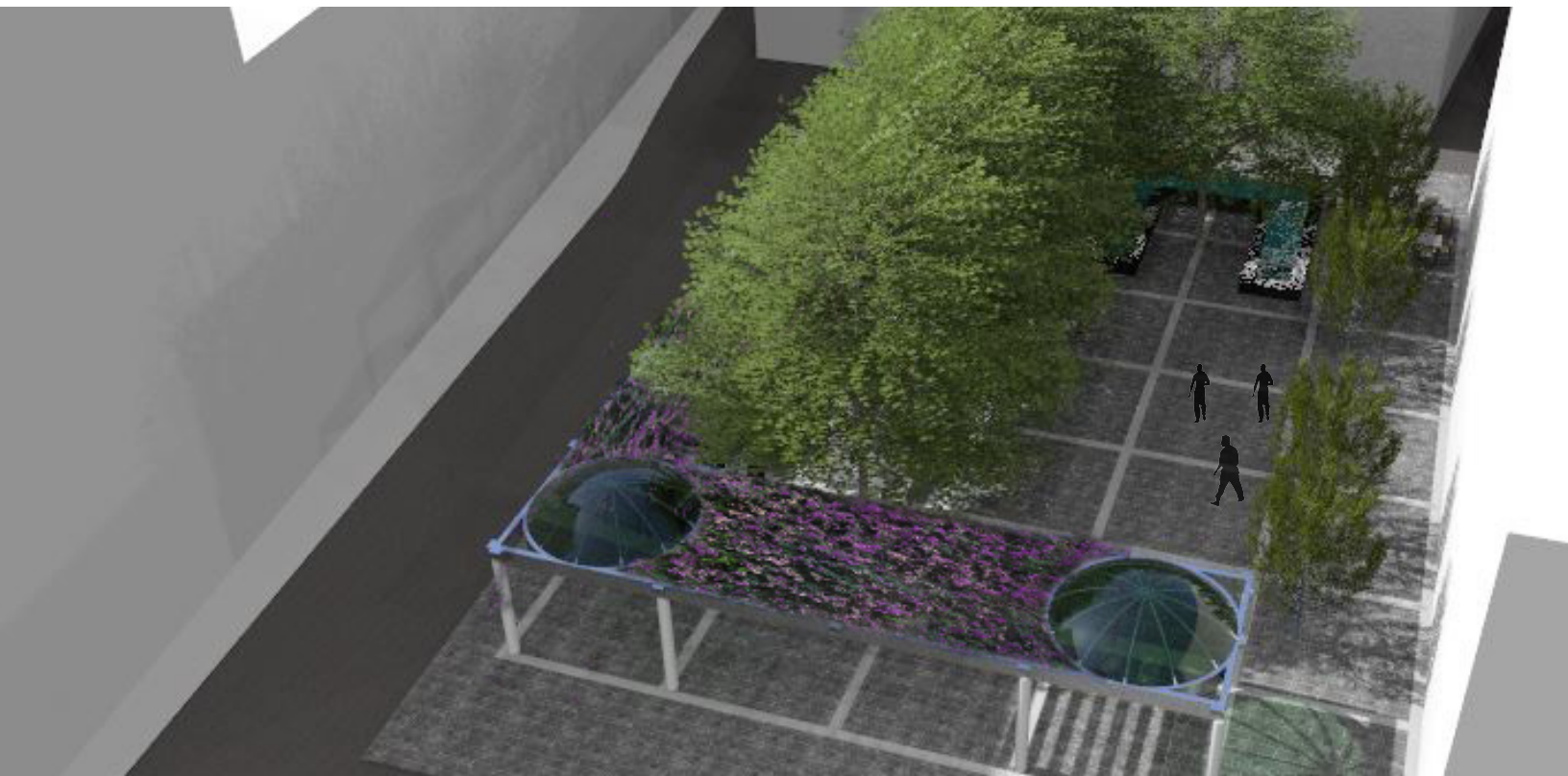
Plaza can be used as an open multiuse space including allowing the use of tents for markets.

The domes signify important entrances and axis in the plaza and are cover by colored glass.

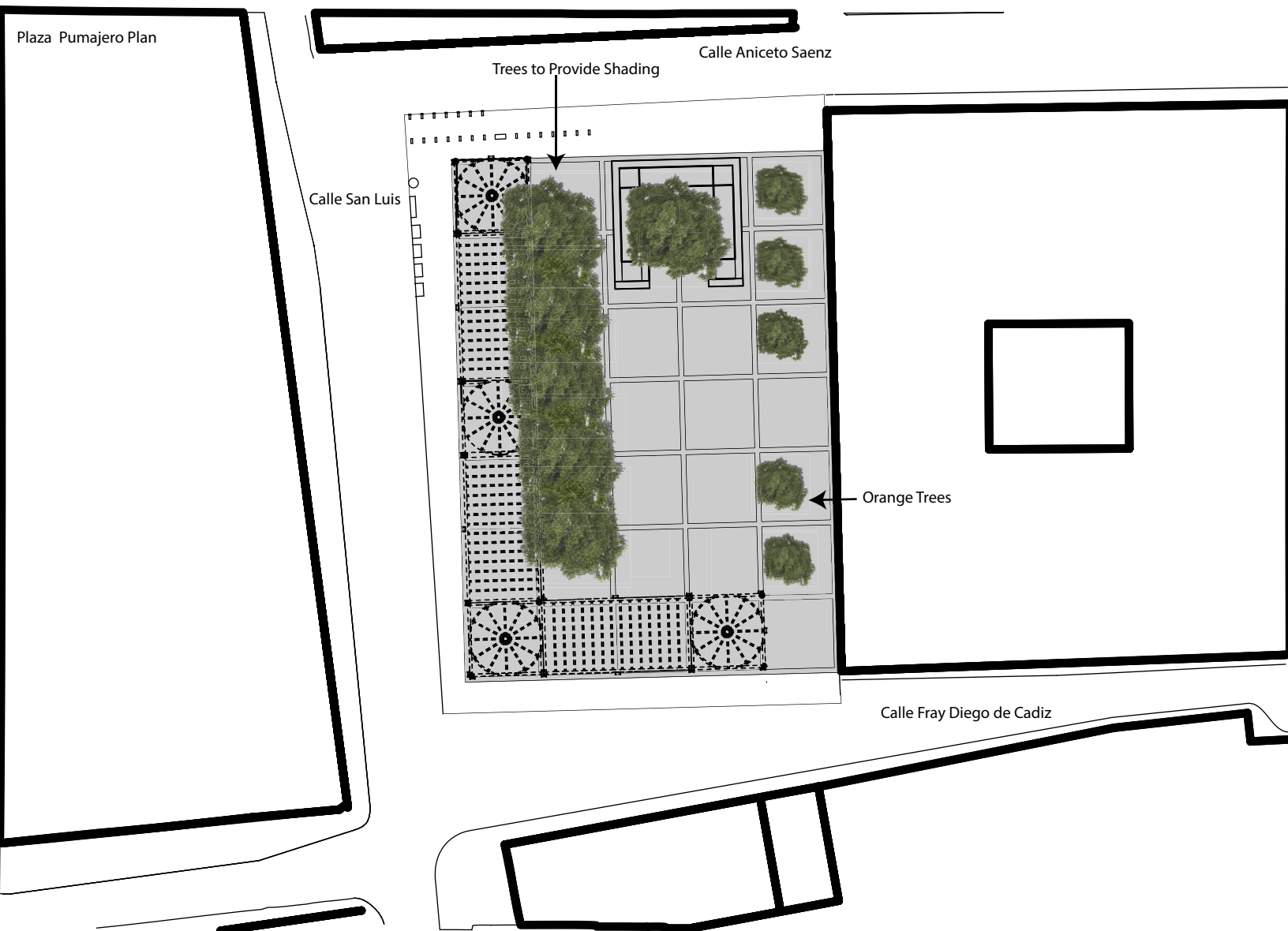
Shade provided by row of trees.

Shade for restaurant seating area provided by arbor covered in flowering vines, which also add to the greenery and color of the plaza.

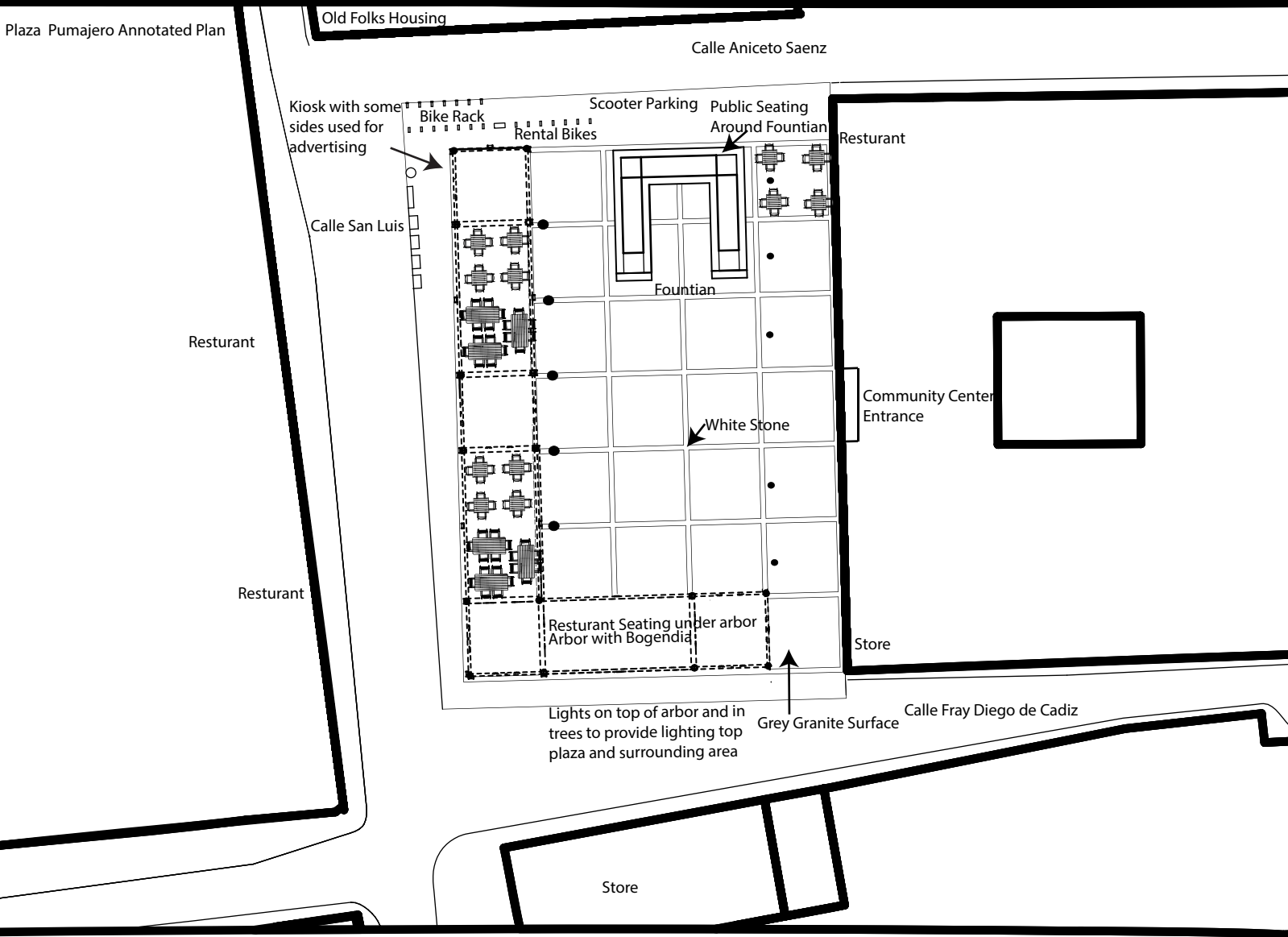
The grid on the ground shows of the organizing feature of the plaza and can even be used to divide up spaces into different events if called for.

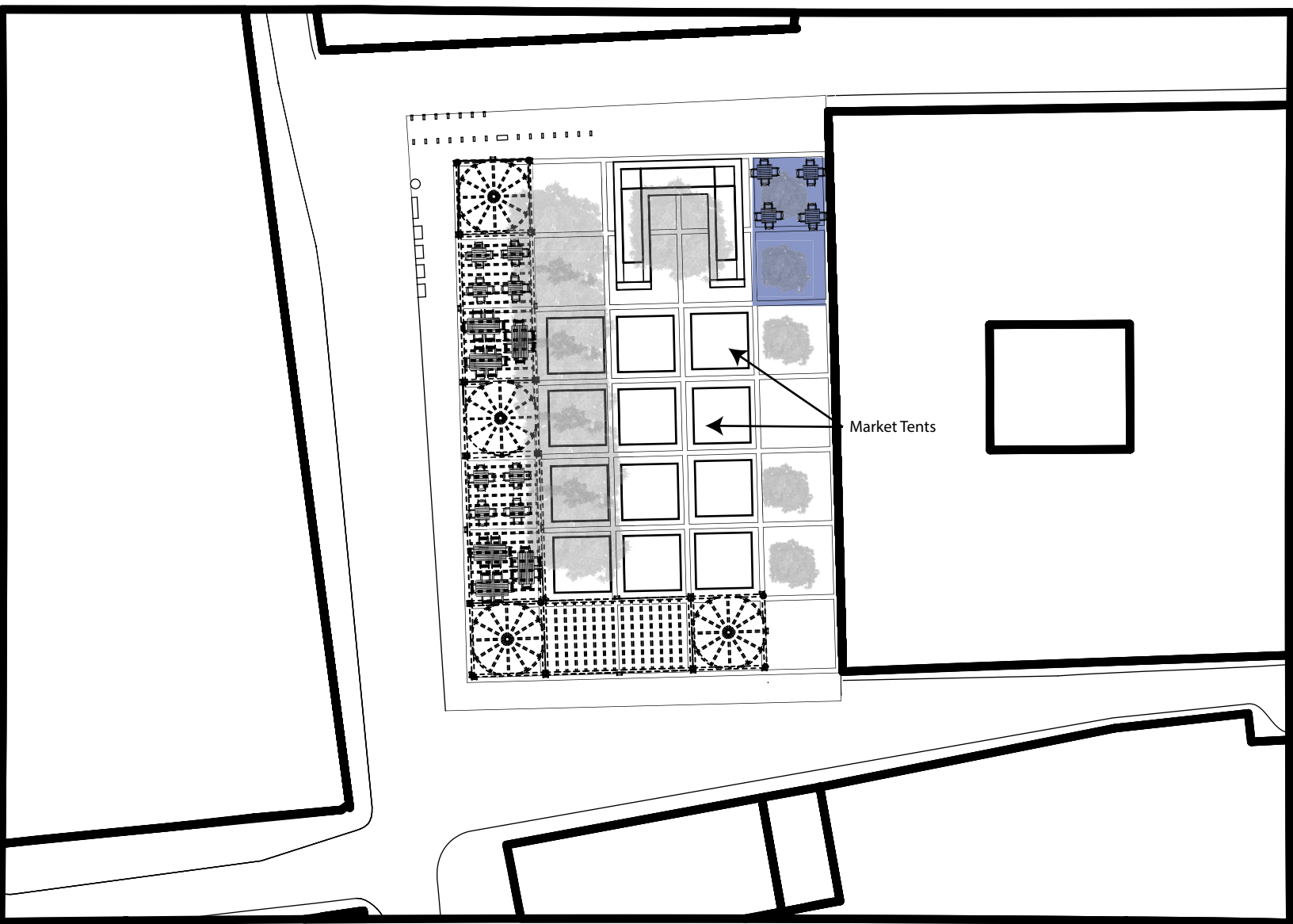




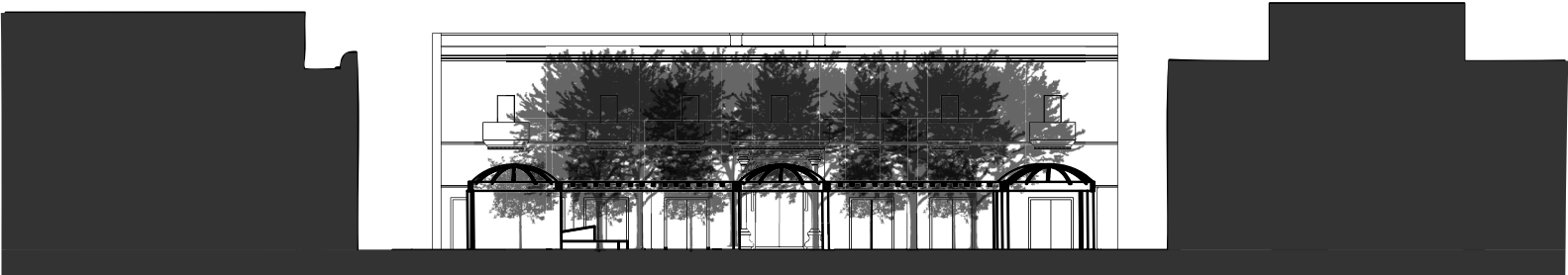


Plaza Pumajero Annotated Plan

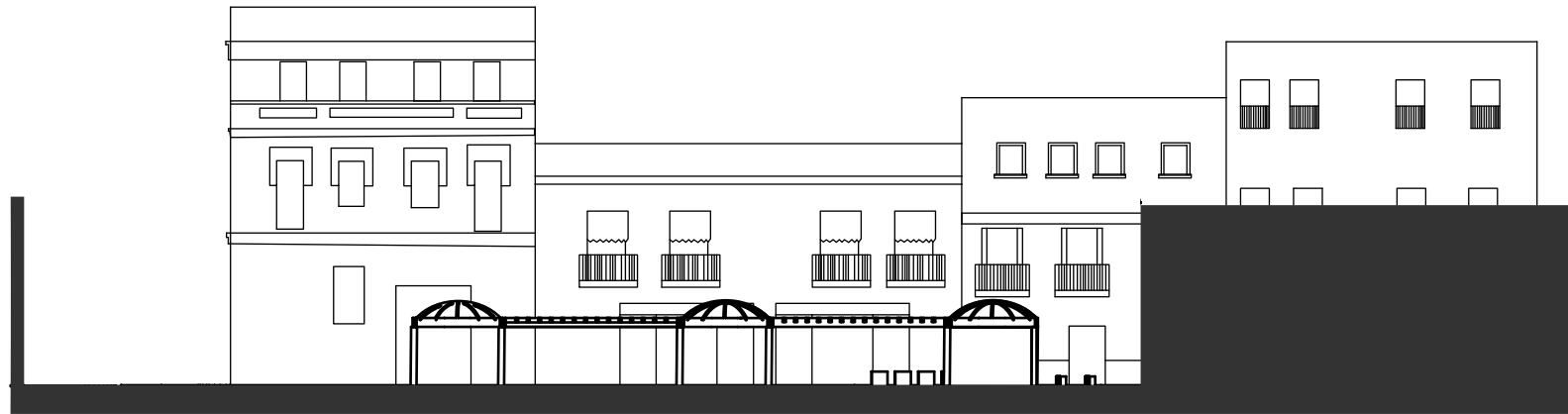




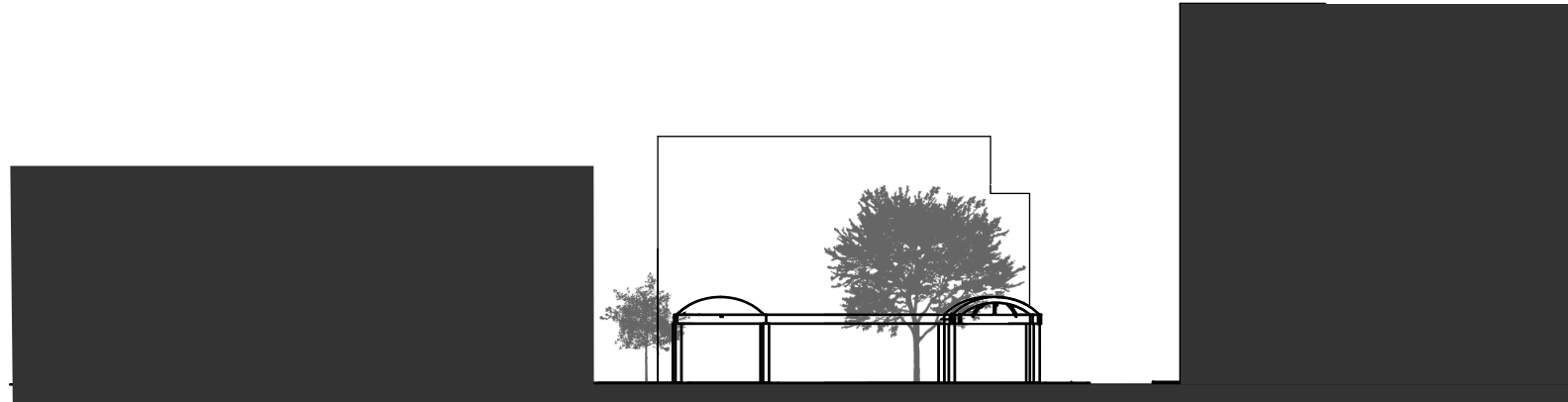
Market Tents



East



West



South



North
Scale 1/32"=1'